

**BANCROFT
MILL
ENGINE
MUSEUM**

**GILLIANS LANE,
BARNOLDSWICK,
NR. COLNE,
LANCS.
BB18 5QR
www.bancoftmill.org.uk**

STEAMING

Sunday 27th July

**Open 11.00am, engine starts 1.00pm.
Cafeteria, shop and the entire site open
until 4.30pm.**

Featuring:

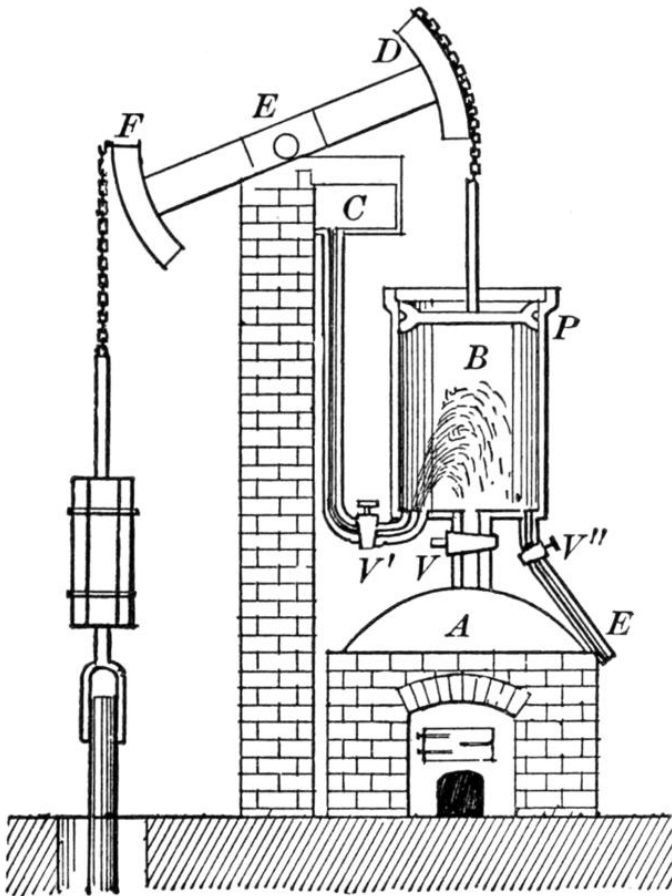
**Mike Rampling, Martin Dawson and their great
music in the engine hall at Bancroft for the first
time!**

Featuring:

**Richard Lamb of Beverley and his large
working model Newcomen (atmospheric) engine.**

The Newcomen Engine.

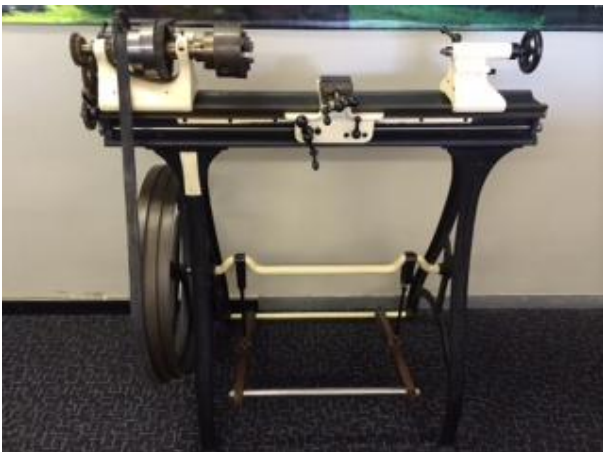
Thomas **Newcomen** (February 1664 – 5 August 1729) was an English inventor who created the first practical steam **engine** for pumping water, the **Newcomen Atmospheric steam engine**. Patented in 1678 it took a further 7 years to produce a working engine.



Steam was raised in the boiler A and passed to the cylinder P by valve V. When V closes V1 admits cold water to the cylinder which condenses the steam in the cylinder. Atmospheric pressure pushes the piston B down, rotates the arm FED and draws the pumping bucket upwards via the chain and rods mounted at F.

Diagram: Newcomen Engine.

During the last steaming we welcomed more visitors from South Africa. John and Mrs. Cryer spent most of the afternoon with us and he writes to express his appreciation of their visit. He encloses photographs of his treadle-operated lathe that might predate the Bancroft exhibit donated by John Hartley of Earby.



New Class P2 Locomotive Prince of Wales 2007 under build in Darlington.

The first Gresley class P2 No. 2001 *Cock o' the North* was completed in 1934 by the London & North Eastern Railway (LNER) at its Doncaster works. (It and someone you know were born that year!) It was the most powerful express passenger steam locomotive ever built for a British railway. Designed by Sir Nigel Gresley, the Chief Mechanical Engineer of the LNER who also designed the famous class A3 No. 4472 *Flying Scotsman* and world speed record holder class A4 No. 4468 *Mallard*, the class, which was eventually to be six in number, was constructed for use on the arduous Edinburgh to Aberdeen route.



Work has commenced on the construction of a new P2 class loco. in Darlington by The P2 Steam Locomotive Company. Their website is commended to you, (P2steam.com) it gives a lot of fascinating information and photographs and is due to be updated after this weekend's intense activity. There is a short video of CNC plate machining plus CAD assemblies. Above is the 1934 loco., picture from a Gresley Society original, its replacement cost is said to be around £5M.

Tees Cottage Pumping Station Coniscliffe Road, Darlington

Tees Cottage Pumping Station has been temporarily closed by the site owner, Northumbrian Water Limited, while they undertake remedial works. The volunteers are unable to open the site to the public during 2014 and all open days and events have been cancelled therefore. Naturally the volunteers are devastated by this news. There is a new website, please visit it, at www.teescottage.com for more details.

Bancroft Mill Engine Museum is on Facebook too, ctrl+click here:-



For more information: call 01695 424166,
Email Harry or Ian, info@bancroftmill.org.uk
Or visit www.bancroftmill.org.uk